



(19) **United States**

⁽¹²⁾ **Patent Application Publication**
Kasai et al.

(10) **Pub. No.: US 2003/0142046 A1**

(43) **Pub. Date:** **Jul. 31, 2003**

(54) **ELECTRONIC CIRCUIT,
ELECTROLUMINESCENT DISPLAY
DEVICE, ELECTRO-OPTICAL DEVICE,
ELECTRONIC APPARATUS, METHOD OF
CONTROLLING THE CURRENT SUPPLY TO
AN ORGANIC ELECTROLUMINESCENT
PIXEL, AND METHOD FOR DRIVING A
CIRCUIT**

(30) **Foreign Application Priority Data**

Jan. 9, 2002 (GB)..... 0200411.7

Publication Classification

(51) **Int. Cl.⁷** **G09G 3/30**

(52) U.S. Cl. 345/76

(75) Inventors: **Toshiyuki Kasai**, Okaya-shi (JP);
Simon Tam, Cambridge (GB)

(57) **ABSTRACT**

Correspondence Address:
OLIFF & BERRIDGE, PLC
P.O. BOX 19928
ALEXANDRIA, VA 22320 (US)

(73) Assignee: **SEIKO EPSON CORPORATION,**
Tokyo (JP)

(21) Appl. No.: **10/337,988**

(22) Filed: **Jan. 8, 2003**

The invention provides an electronic circuit that can include a programming path and a reproduction path. The circuit can further include a current driven element, a transistor in the production path arranged so as to operatively control a current supplied to the current driven element, a capacitor arranged for storing an operating voltage of the transistor, an additional transistor arranged in parallel to the transistor in the programming path for storing the capacitor and the operating voltage, and a switching device that controls the programming path and the reproduction path.

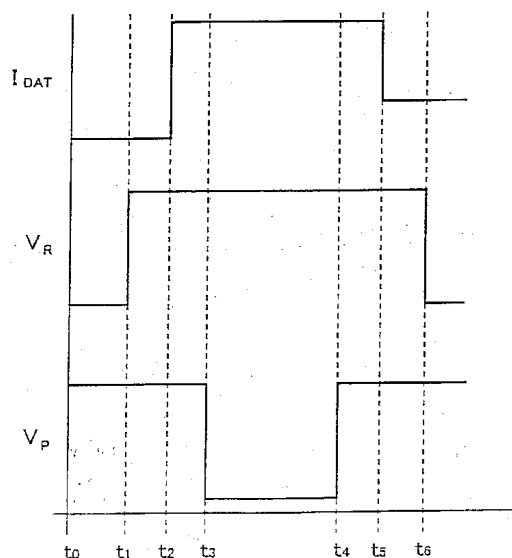
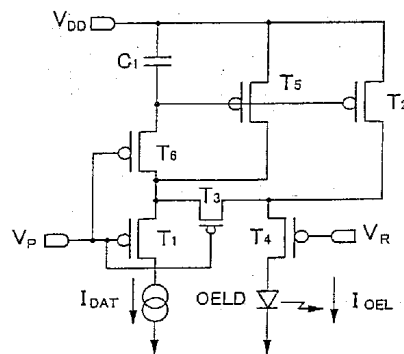


FIG. 1

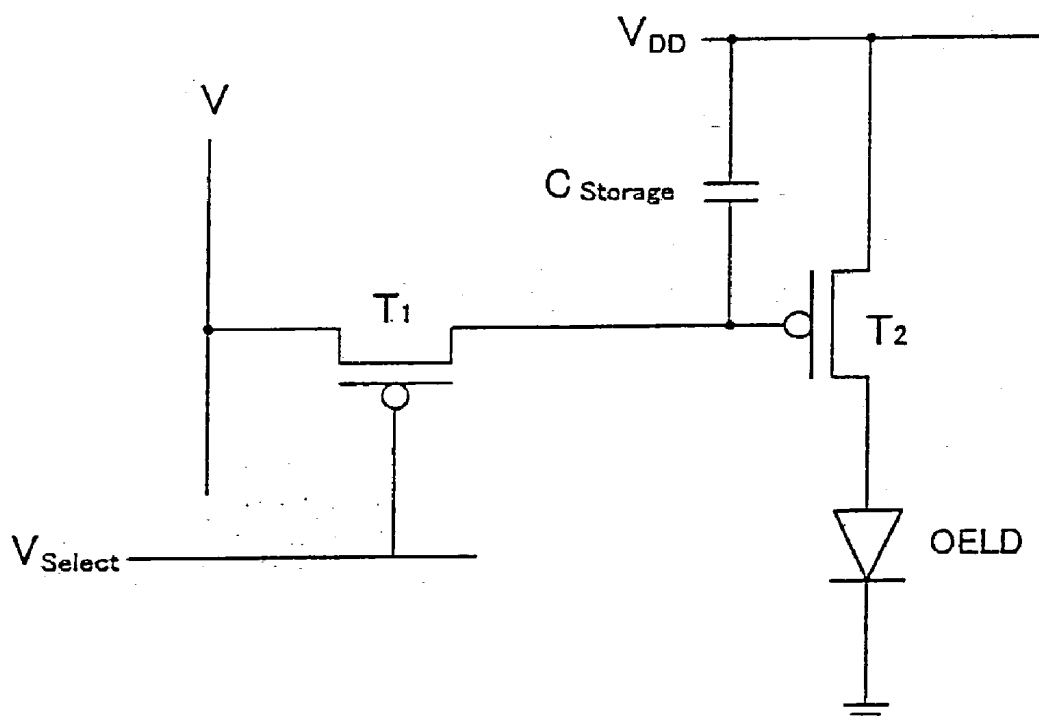


FIG. 2

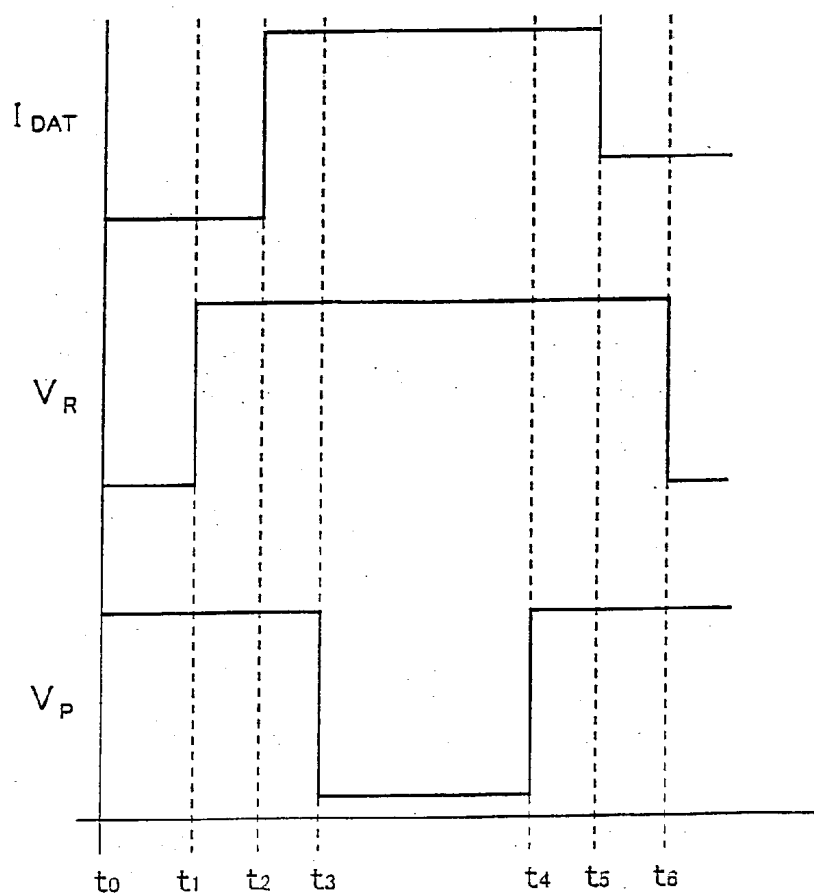
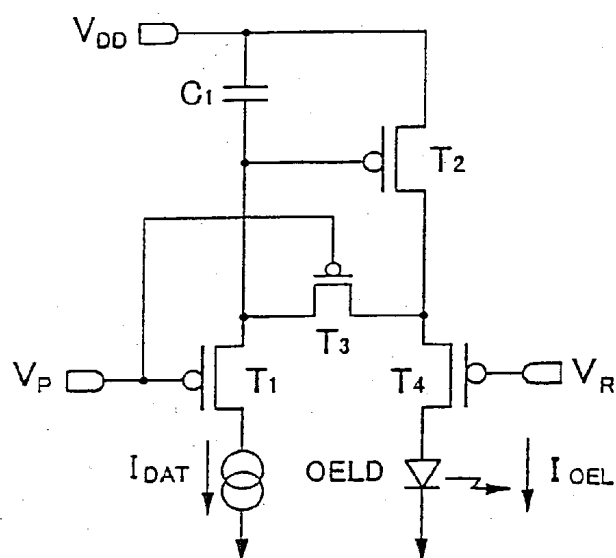


FIG. 4

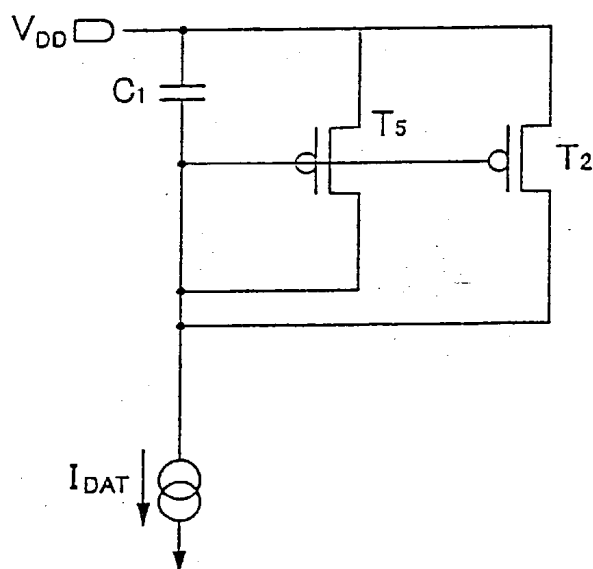


FIG. 5

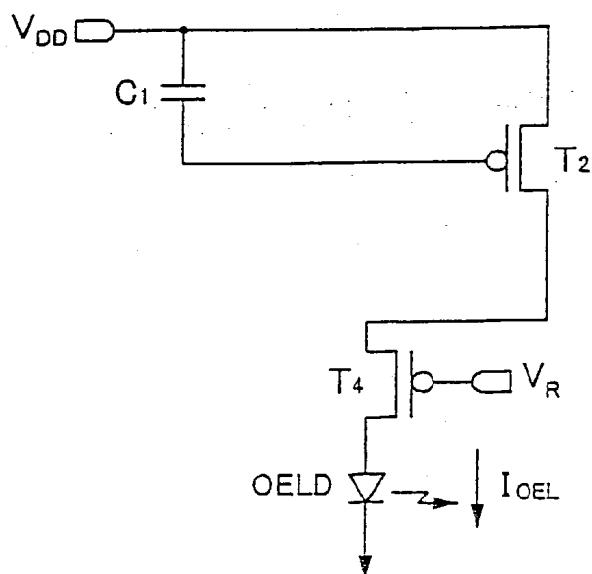


FIG. 6A

| | I_{DAT} | I_{OEL} |
|----------------------|-----------|-----------|
| the circuit in Fig.2 | 100 n A | 100 n A |
| the invention | 1 μ A | |

FIG. 6B

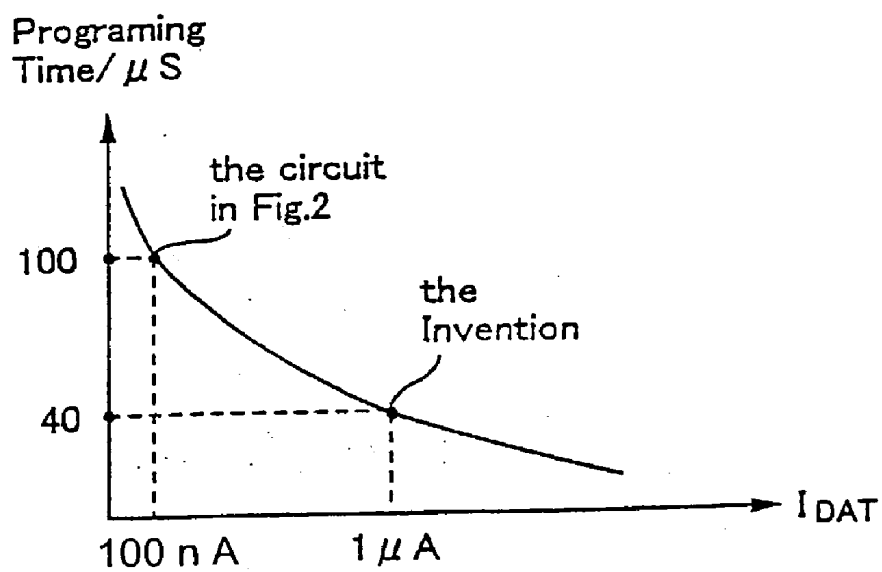


FIG. 7

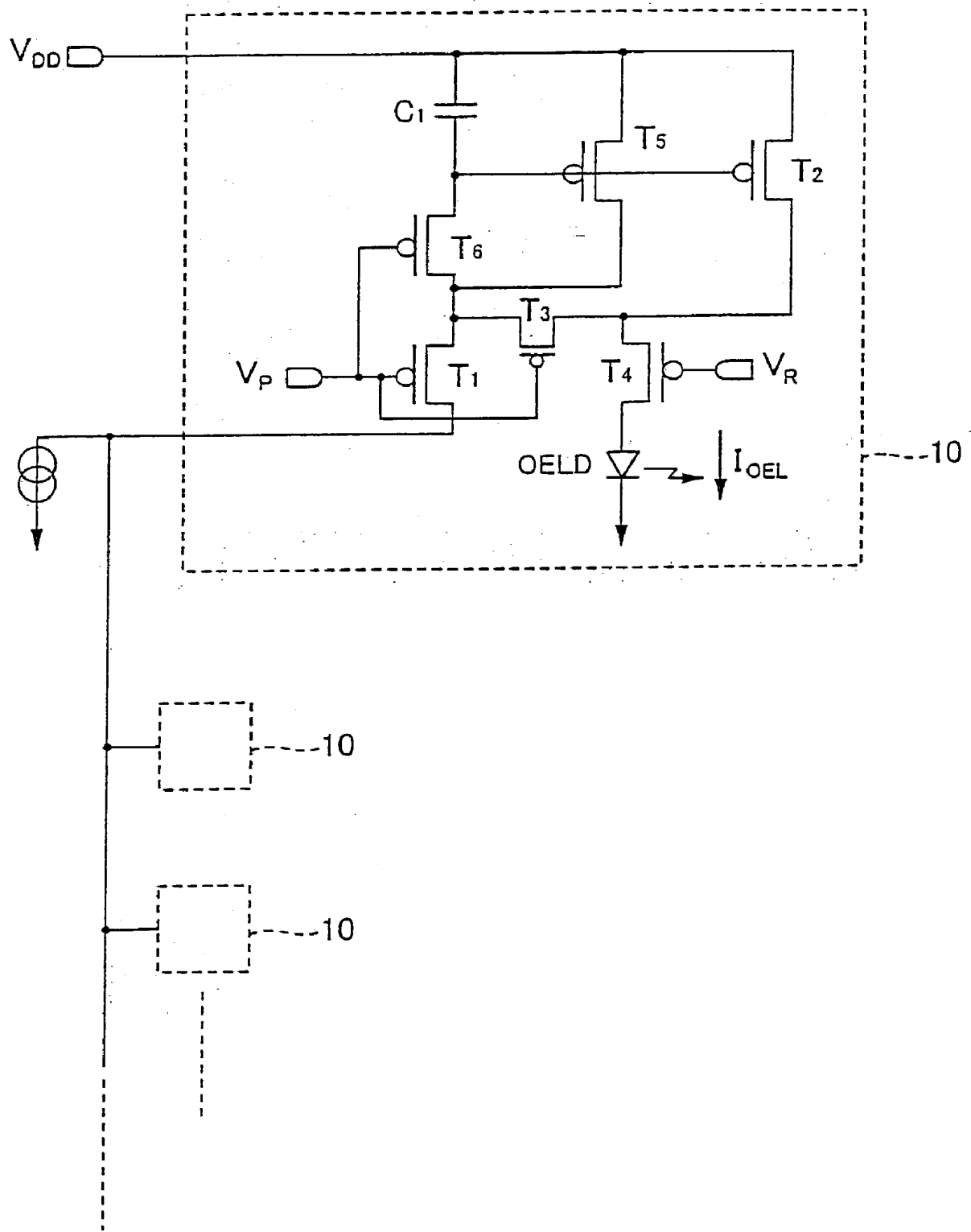


FIG. 8

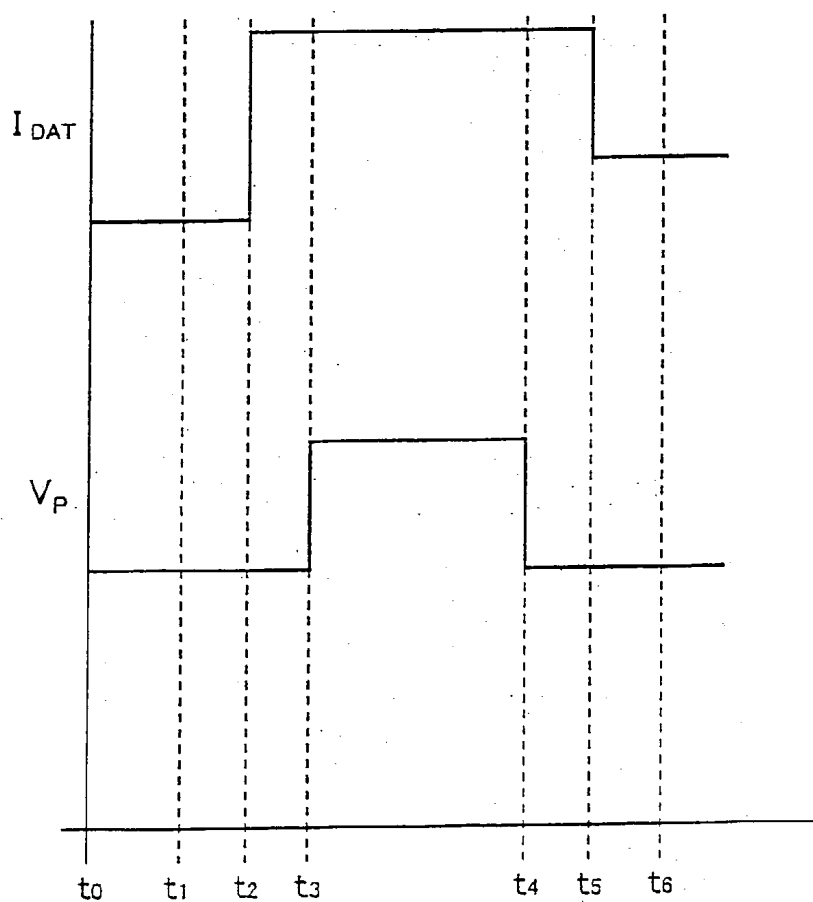
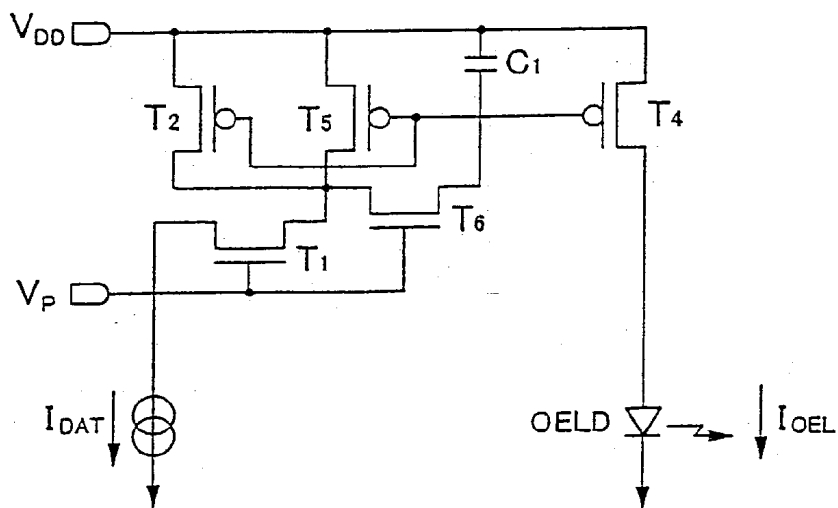


FIG.9

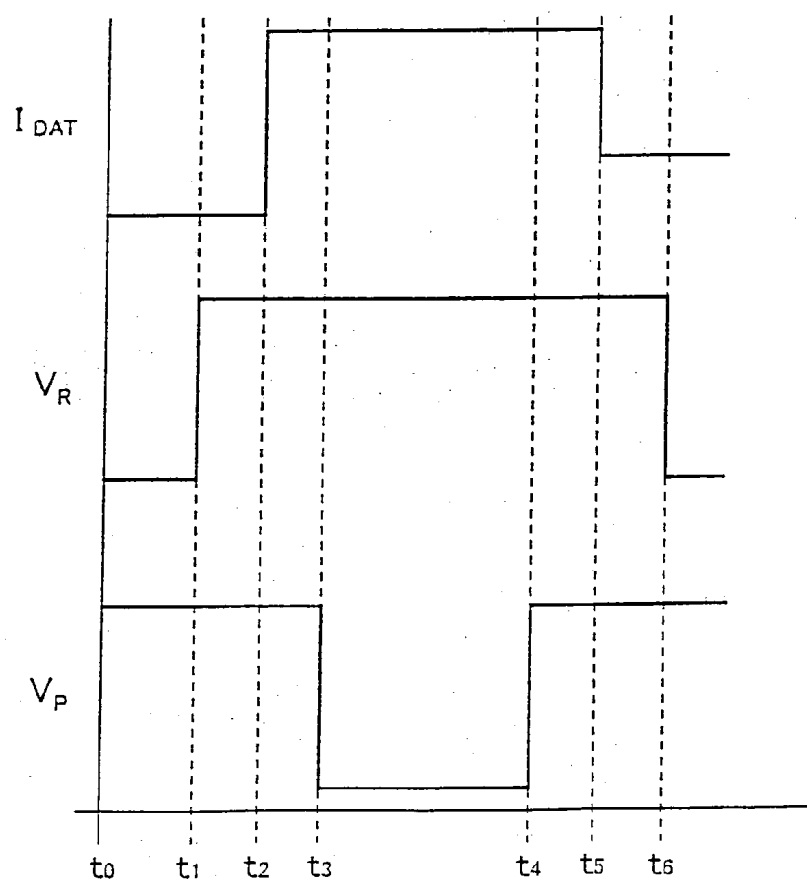
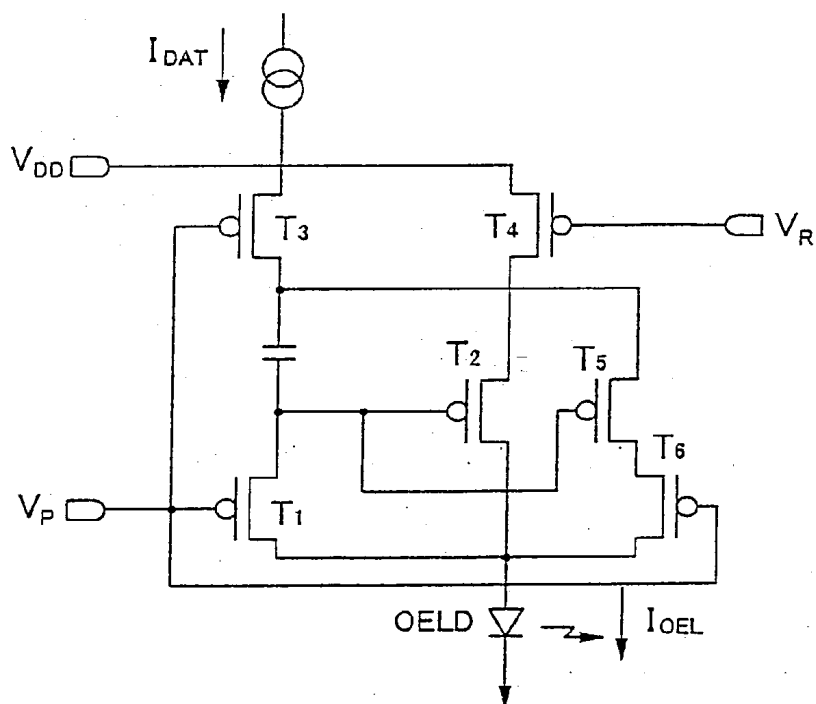


FIG.10

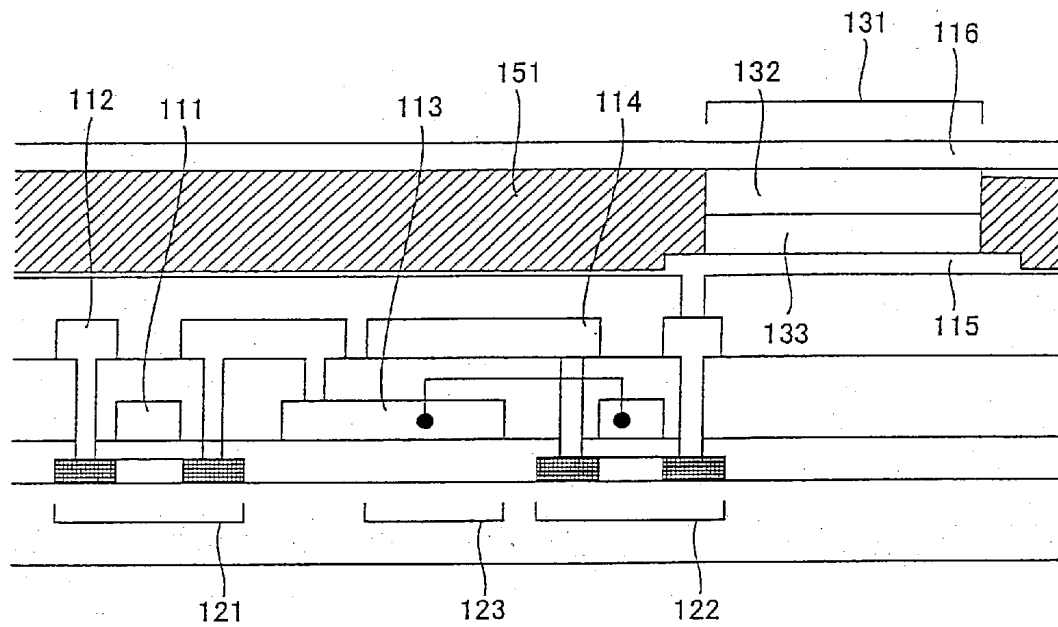


FIG.11

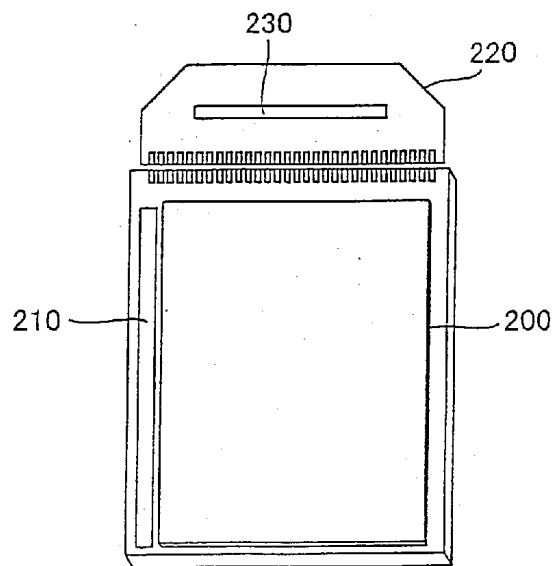


FIG.12

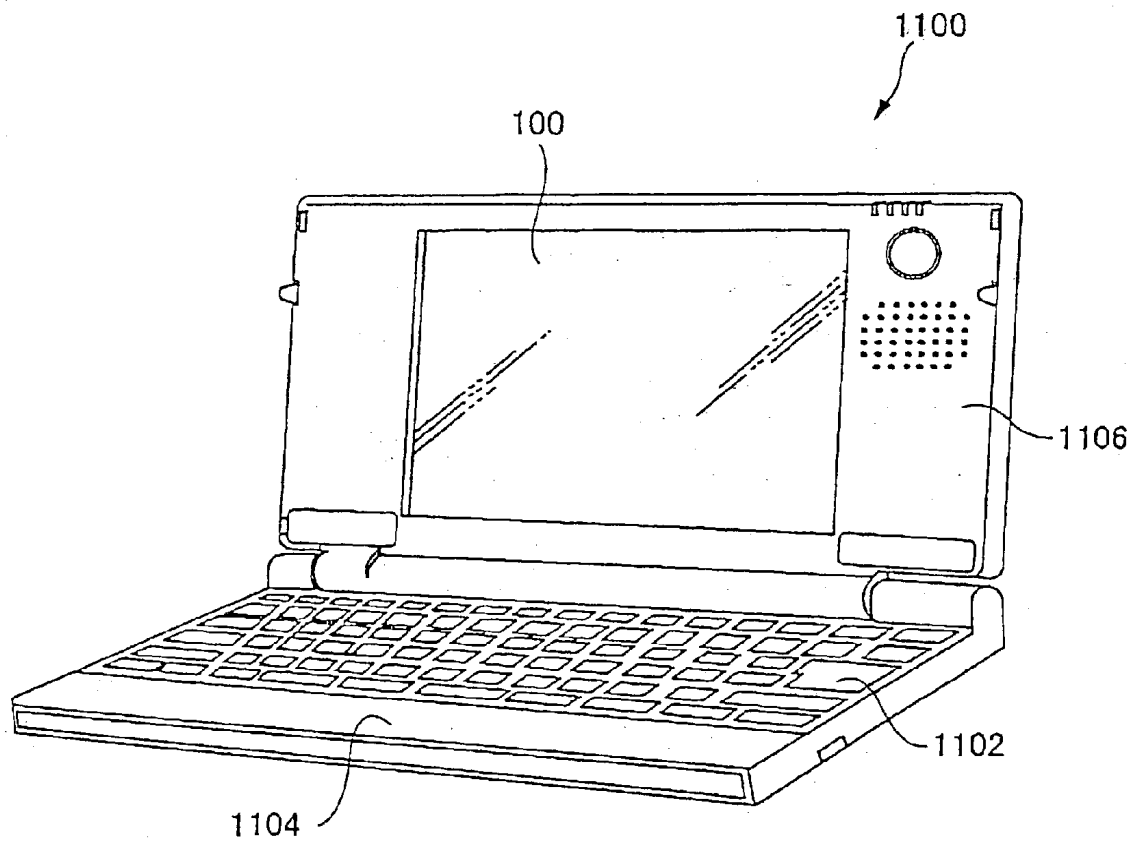


FIG. 13

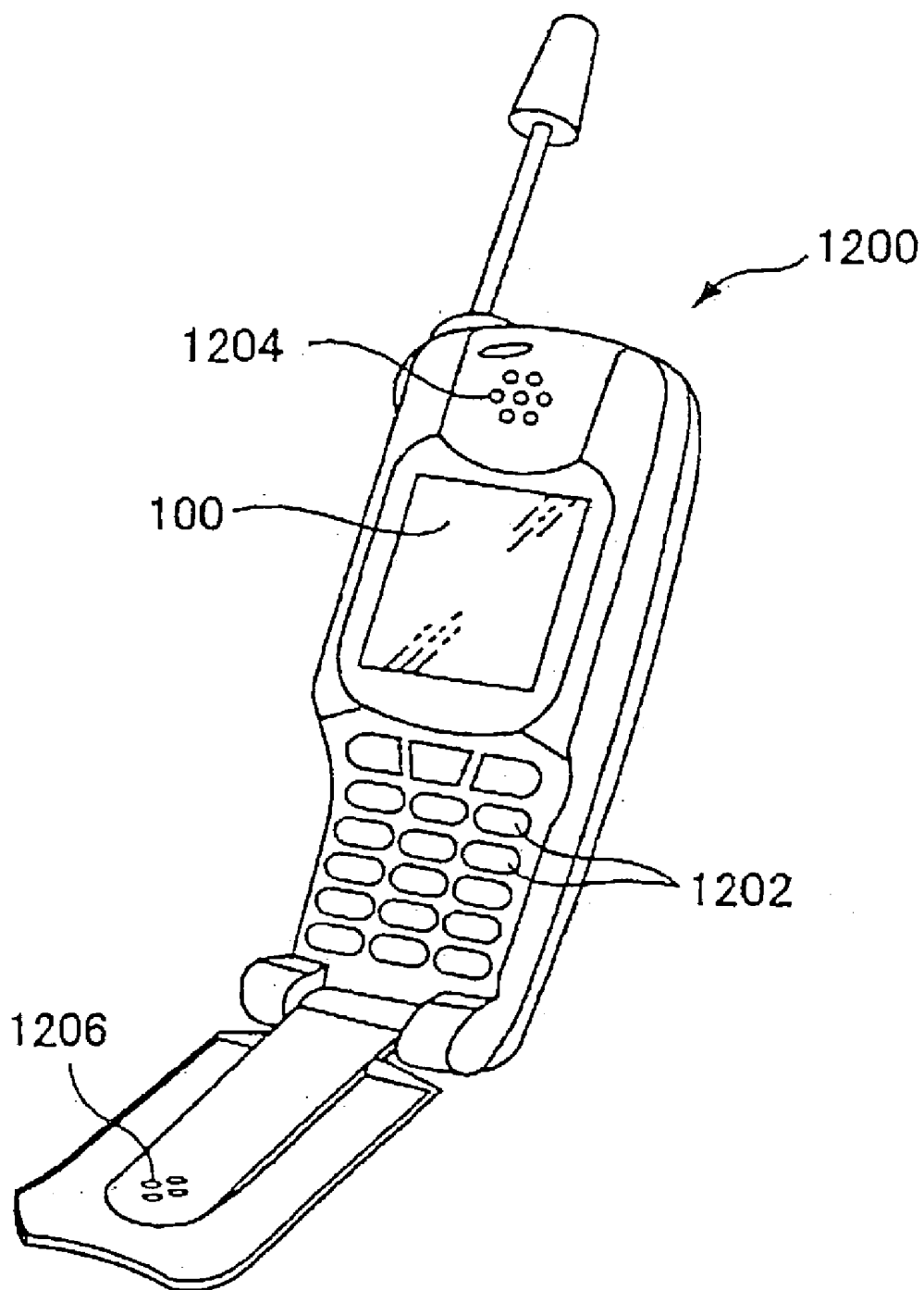


FIG. 14

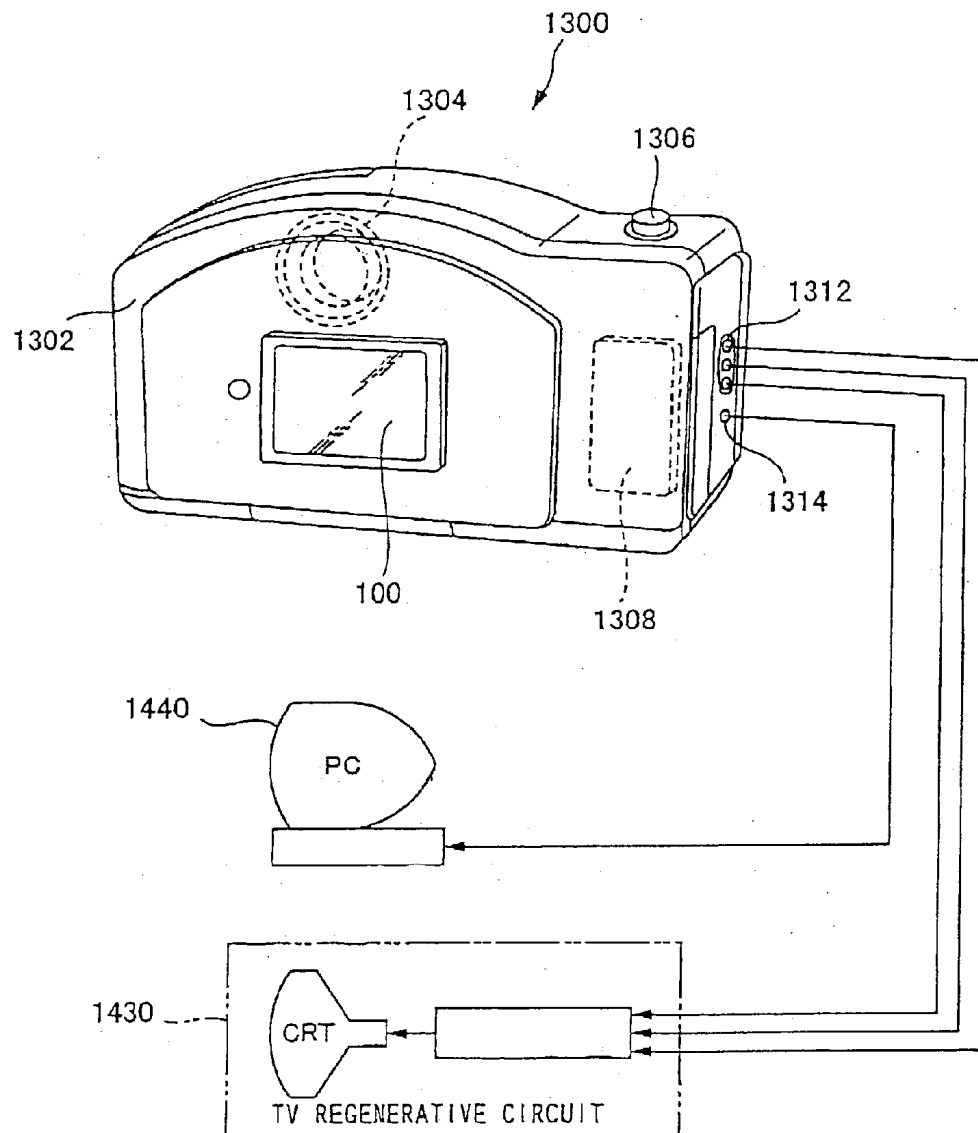


FIG. 15

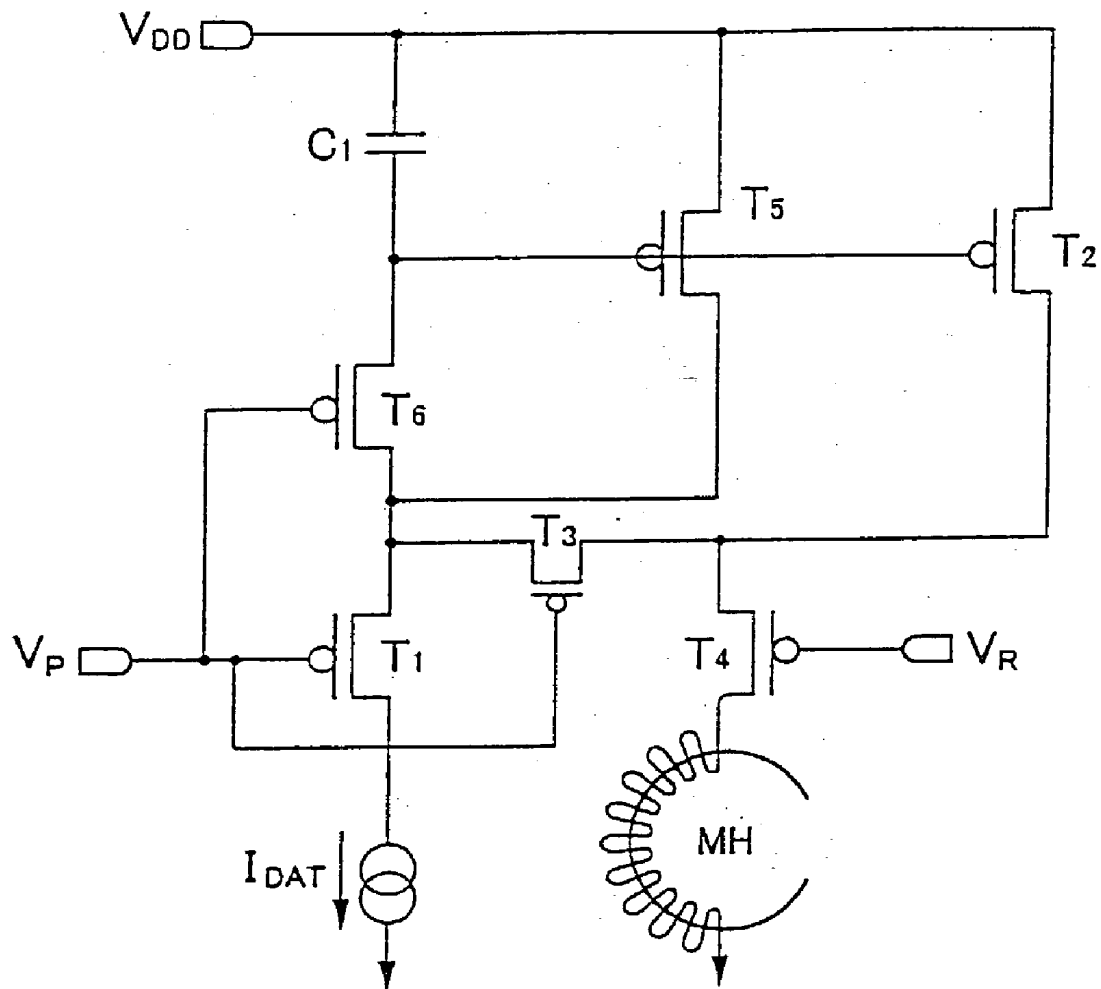


FIG. 16

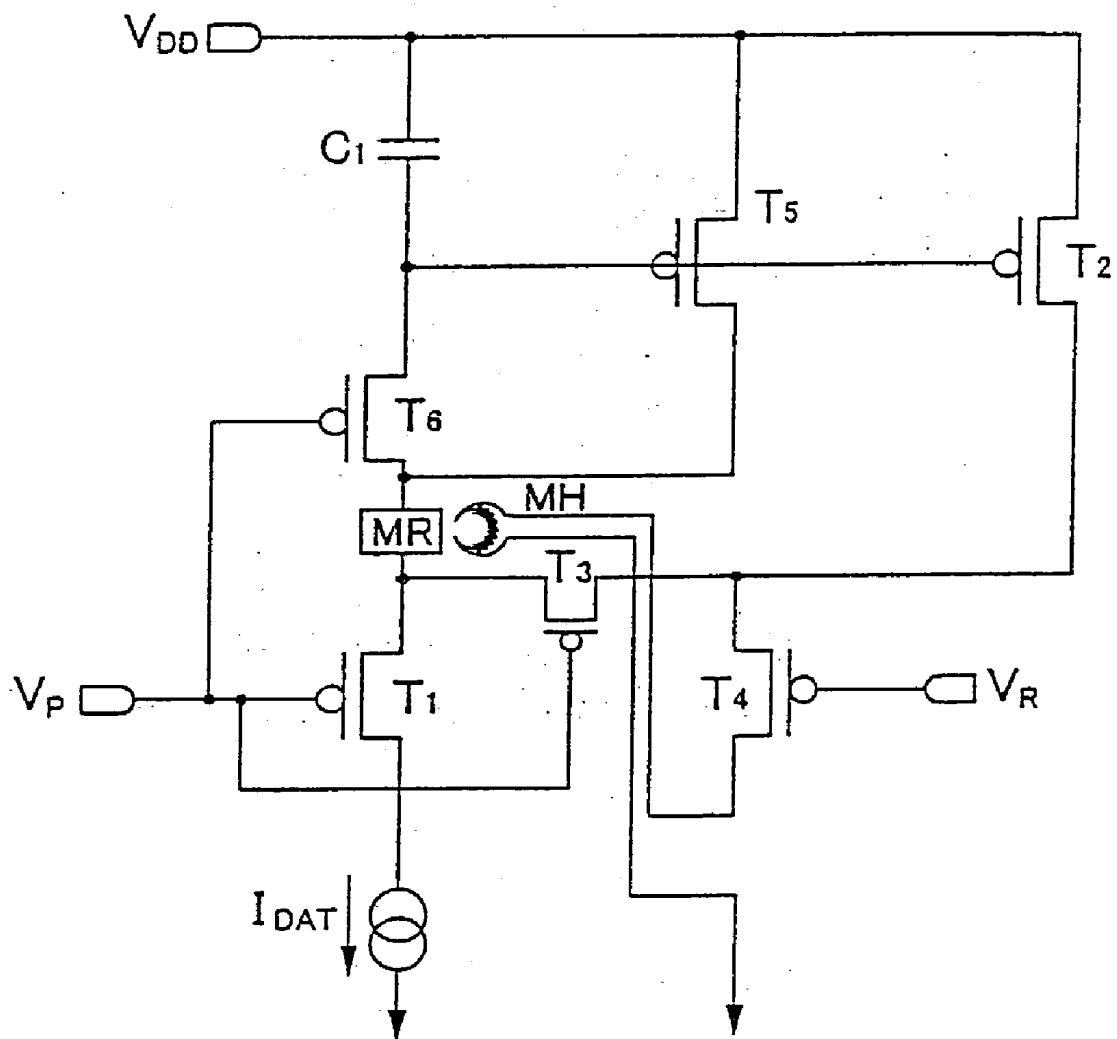
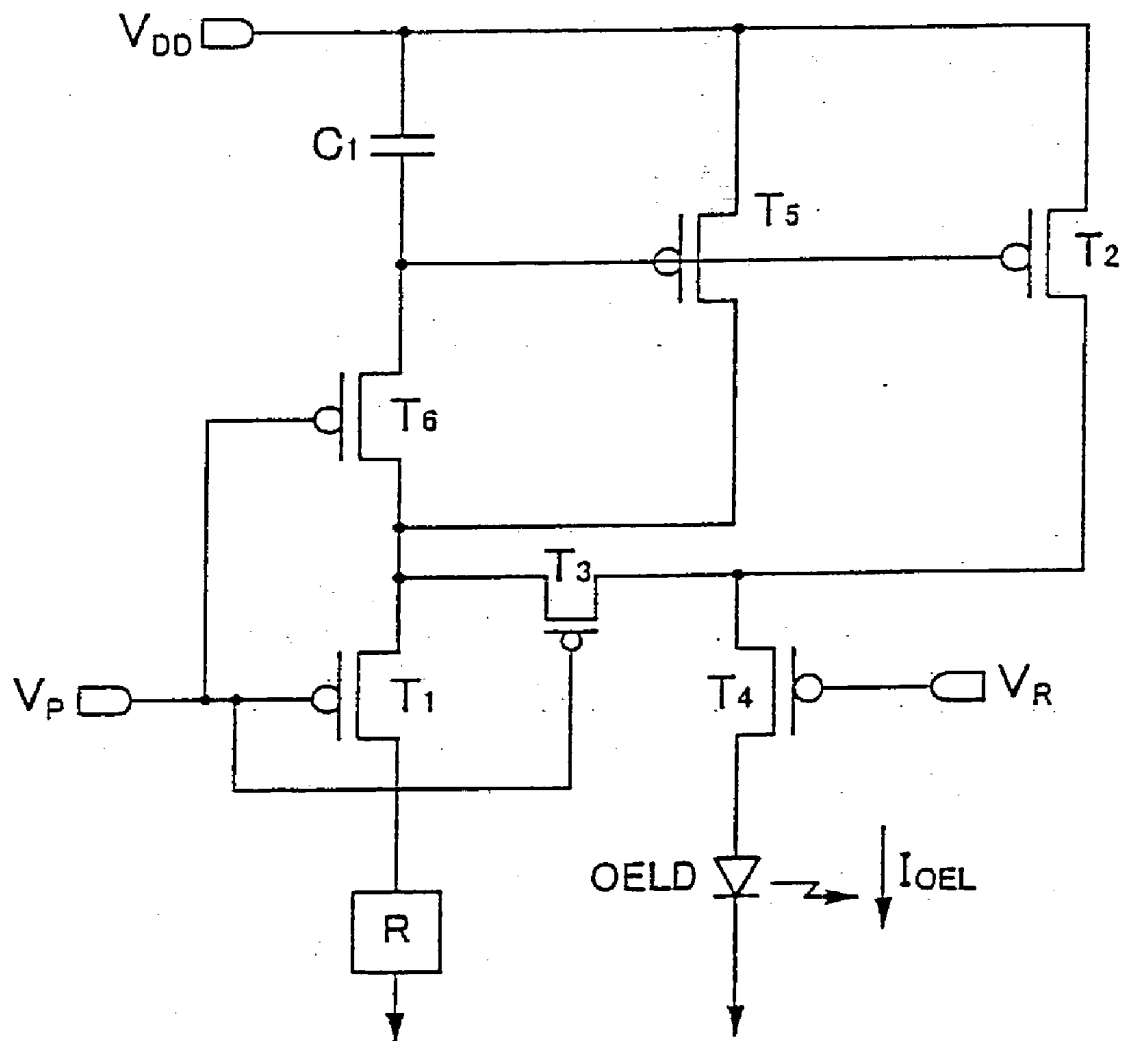


FIG. 18



**ELECTRONIC CIRCUIT,
ELECTROLUMINESCENT DISPLAY DEVICE,
ELECTRO-OPTICAL DEVICE, ELECTRONIC
APPARATUS, METHOD OF CONTROLLING THE
CURRENT SUPPLY TO AN ORGANIC
ELECTROLUMINESCENT PIXEL, AND METHOD
FOR DRIVING A CIRCUIT**

BACKGROUND OF THE INVENTION

[0001] 1. Field of Invention

[0002] The present invention relates to an electronic circuit with one particular application of such an electronic circuit being as a circuit for driving a pixel of an organic electroluminescent device.

[0003] 2. Description of Related Art

[0004] An organic electroluminescent (OEL) element can include a light emitting material layer sandwiched between an anode layer and a cathode layer. Electrically, this element operates like a diode. Optically, it emits light when forward biased, and the intensity of the emission increases with the forward bias current. It is possible to construct a display panel with a matrix of OEL elements fabricated on a transparent substrate and with at least one of the transparent electrode layers, one can also integrate the driving circuit on the same panel by using low temperature polysilicon thin film transistor (TFT) technology.

[0005] In a basic analog driving scheme for an active matrix OEL display, a minimum of two transistors are required per pixel (**FIG. 1**). T_1 is for addressing the pixel and T_2 is for converting the data voltage signal, to a driver current for an OELD to emit light at a designated brightness. This data signal is stored by the storage capacitor, C_{storage} , when the pixel is not addressed. Although p-channel TFTs are shown in the figures, the same principle can also be applied for a circuit with n-channel TFTs.

SUMMARY OF THE INVENTION

[0006] The pixel driver circuit (electronic circuit), as shown in **FIG. 2**, can include a transistor T_2 that operates as an analog current controller to provide the driving current to the OELD. Further, the storage capacitor C_1 is connected between the gate and source terminals of T_2 . In a circuit shown in **FIG. 2**, the drain of the transistor T_2 is connected to the source of the transistor T_1 via the source-drain path of the transistor T_3 . The source of the transistor T_1 is connected to the gate of the transistor T_2 and the gates of the T_1 and T_3 are connected to each other. The gates of the T_1 and T_3 are applied with a programming voltage V_p . The transistor T_4 which is turned off during a programming stage, connects the drain of the T_2 and the source of the T_3 to the OELD. During the programming stage, the transistor T_1 connects the T_2 to a current sink which is grounded or which is connected to a reference voltage. At this stage, the current which flows into the OEL element via the transistor T_2 is 0.

[0007] In the circuit of **FIG. 2**, T_4 is OFF, and T_1 and T_3 are ON in the programming stage. The T_3 which is ON has an effect of operating the T_2 as a diode. Further, the T_1 connects this diode to the data current sink. As a result, the storage capacitor C_1 stores (stores the charge) (or discharges, depending on the voltage stored during the previous frame). Storage capacitor C_1 charges to the gate/source voltage of

transistor T_2 , and thus stores the voltage (V_{GS2} , corresponding to the data current I_{DAT}), which will control the current supply to the OEL element during the reproduction stage. At the end of the programming stage, T_1 and T_3 are switched off. The voltage V_{GS2} is noted on C_1 for the remainder of the frame period (that is, in the reproduction stage).

[0008] The off resistance of T_3 can be important, because after C_1 has been charged and T_3 is switched off, the off resistance of T_3 can affect the voltage across C_1 for the rest of the frame period. Thus, the gate/source capacitance of T_3 should preferably be small compared with C_1 .

[0009] The reproduction voltage V_R is applied to the gate of transistor T_4 . At the beginning of the reproduction stage, in the circuit of **FIG. 2**, T_4 is switched on and T_1 and T_3 remain switched off. As a result, T_2 acts as a current source with V_{GS2} biased by C_1 , thus supplying current to the OEL element. At the end of the reproduction stage T_4 is switched off, and T_1 and T_3 remain switched off. This completes one cycle. The driving waveform is indicated in **FIG. 2**.

[0010] It will be noted that according to the circuit shown in **FIG. 2**, no current is supplied to the current driven element by the current controlling transistor during the programming stage. In accordance with the present invention in an electroluminescent device a pixel driver circuit can be implemented without degrading the perceived image presented by the electroluminescent device. In effect, the present invention provides for separation of the programming and the reproduction current paths. This enables a number of advantages to be achieved. For example, if there is no current flow through the OEL element during the programming stage then the programming stage operates more quickly since the arrangement avoids the slow down caused by the parasitic capacitance of the OEL element.

[0011] The circuit of **FIG. 2** is effective, but there is still a need to lower the consumption electric power. Therefore, with the improvement of the materials of the recent OEL element, the circuit may be driven even with a small current.

[0012] However, particularly, when expressing a low gradient, it is necessary for the data current I_{DAT} to be made extremely small in the programming stage, and there are problems, such as the charging speed to the storage capacitor C_1 becoming slow. In addition when programming is performed by a small data current I_{DAT} , due to a variation in manufacture of the storage capacitor C_1 and a data line, the charging speed and the stored charge to the storage capacitor C_1 may be seen.

[0013] According to a first aspect of the present invention there is provided an electronic circuit having both a programming path and a reproduction path, the circuit can include a current driven element, a transistor in the production path arranged so as operatively to control a current supplied to the current driven element, a capacitor arranged for storing an operating voltage of the transistor, an additional transistor arranged so as to be in parallel to the transistor in the production path, for storing the operating voltage in the capacitor, and a switching device for controlling the programming path and the reproduction path.

[0014] According to a second aspect of the present invention there is provided an electronic circuit for driving a pixel of an electroluminescent device. The pixel can include an electroluminescent element. The circuit can include a tran-

sistor arranged so as operatively to control the current supplied to the electroluminescent element, a capacitor arranged for storing an operating voltage of the transistor during a programming stage, an additional transistor arranged in parallel to the transistor for storing the operating voltage to the capacitor, a first switching device that is connected so as operatively to establish a current path through the transistor and the additional transistor during the programming stage, and a second switching device that is connected so as to operatively establish a current path through the transistor and the electroluminescent element during a reproduction stage.

[0015] According to a third aspect of the present invention, there is provided an electronic circuit for driving a pixel of an electroluminescent device. The pixel can include an electroluminescent element. The circuit can include a transistor connected so as operatively to control the current supplied to the electroluminescent element, a capacitor connected for storing an operating voltage of the transistor during a programming stage, an additional transistor connected in parallel with the transistor for storing the operating voltage in the capacitor, a first switching device that is connected so as to establish a current path through the transistor and the additional transistor during the programming stage, a second switching device that is connected so as to establish when operative a current path through the transistor and the electroluminescent element during a reproduction stage, and a current sink, and the first switching device that is arranged such that the current path in the programming stage is connected to the current sink via the transistor and the additional transistor.

[0016] According to a fourth aspect of the present invention, there is provided an electronic circuit having a current driven element, a data line for outputting a current as a data signal, a capacitor for storing charge based on current output via the data line, a plurality of transistors arranged in parallel to each other as well as the capacitor being connected to the gate, and a driver transistor arranged in series to the current driven element. The electronic circuit can supply current according to the charge stored in the capacitor based on the current amount flowing in the current path including the plurality of transistors in a state the plurality of transistors are connected to the data line via the driven transistor.

[0017] According to a fifth aspect of the present invention there is provided an electronic circuit for driving the pixel of the electroluminescent device, the pixel can include the electroluminescent element. The circuit can include a current driven element, a data line for outputting a current as a data signal, a capacitor for storing charge based on the current output via the data line, a plurality of transistors with the capacitor being connected to a gate, and a driven transistor arranged in series to the current driven element. The electronic circuit can supply a current according to the charge stored in the capacitor based on the current amount flowing in the current path including the plurality of transistors in a state where the plurality of transistors are connected to the data line via the driven transistor (T_4) to the current driven element. The circuit can further include a switching device for forming a programming path through the plurality of transistors, and a current sink, and the switching device is arranged to connect to the current sink via the plurality of transistors in the programming path.

[0018] According to a sixth aspect of the present invention there is provided an electronic circuit having a current driven element, a data line for outputting a current as a data signal, a capacitor for storing charge based on a current output via the data line, a plurality of transistors arranged in parallel to each other as well as the capacitor being connected with a gate, and a driver transistor arranged in series to the current driven element. The electronic circuit supplies current according to the charge stored in the capacitor based on the current amount flowing in the current path including the plurality of transistors in a state the plurality of transistors are connected to the data line via at least one of the plurality of transistors.

[0019] According to a seventh aspect of the present invention there is provided an electronic circuit for driving a pixel of the electroluminescent device, the pixel can include the electroluminescent element. The circuit can further include a current driven element, a data line for outputting a current as a data signal, a capacitor for storing charge based on current output via the data line in the programming stage, and a plurality of transistors with the capacitor being connected to the gate. The electronic circuit supplies current according to the charge stored in the capacitor based on the current amount flowing in the current path including the plurality of transistors in a state the plurality of transistors are connected to the data line via the driven transistor to the current driven element. Additionally, the circuit can include a first switching device for operatively generating a current path through the plurality of transistors in the programming stage, and a second switching device for operatively generating a current path through at least one of the plurality of transistors and the electroluminescent element in the reproduction stage.

[0020] According to an eighth aspect of the present invention there is provided an electroluminescent display device having one or more electronic circuit.

[0021] According to a ninth aspect of the present invention there is provided an electronic apparatus incorporating an electroluminescent display device.

[0022] According to a tenth aspect of the present invention there is provided a method of controlling a current supply to an electroluminescent element including the steps of providing a programming path including a plurality of auxiliary (or sub-) current paths, and providing a reproduction path which passes through the electroluminescent element.

[0023] According to an eleventh aspect of the present invention there is provided a method of controlling a current supply to an electroluminescent element including the steps of providing a programming path including a plurality of auxiliary (or sub-) current paths which connects to a current sink and providing a reproduction path which passes through the electroluminescent element.

[0024] According to this invention, since data current may be large, the programming operation may be performed more quickly.

BRIEF DESCRIPTION OF THE DRAWINGS

[0025] The invention will be described with reference to the accompanying drawings, wherein like numerals reference like elements, and wherein:

[0026] FIG. 1 shows a conventional OEL element pixel driver circuit using two transistors;

[0027] FIGS. 2A and 2B show a known current programmed OEL element driver circuit and corresponding driving waveform;

[0028] FIGS. 3A and 3B show a pixel driver circuit according to a first embodiment of the present invention and corresponding driving waveform;

[0029] FIG. 4 shows an equivalent circuit in a programming stage of a pixel driver circuit according to an embodiment of the present invention;

[0030] FIG. 5 shows an equivalent circuit in a reproduction stage of a pixel driver circuit according to an embodiment of the present invention;

[0031] FIGS. 6A and 6B are a table and a diagram related to a data current value and a programming stage operation speed, and compares a pixel driver circuit of an embodiment according to the present invention and a pixel driver circuit of FIG. 2;

[0032] FIG. 7 is an example of a circuit diagram applying an OEL element and a pixel driver circuit to a display in an embodiment of the present invention;

[0033] FIGS. 8A and 8B show another embodiment of a pixel driver circuit according to the present invention and corresponding driving waveform;

[0034] FIGS. 9A and 9B show further another embodiment of a pixel driver circuit according to the present invention and corresponding driving waveform;

[0035] FIG. 10 is a schematic sectional view showing an OEL element device mounted with a pixel driver circuit according to the present invention;

[0036] FIG. 11 is a schematic plan view of an OEL display panel according to the present invention;

[0037] FIG. 12 is a schematic view of a mobile personal computer incorporating a display device having a pixel driver circuit according to the present invention;

[0038] FIG. 13 is a schematic view of a mobile telephone incorporating a display device having a pixel driver circuit according to the present invention;

[0039] FIG. 14 is a schematic view of a digital camera incorporating a display device having a pixel driver circuit according to the present invention;

[0040] FIG. 15 illustrates an application of a driver circuit of the present invention to a magnetic RAM;

[0041] FIG. 16 illustrates an application of a driver circuit of the present invention to a magneto resistive element;

[0042] FIG. 17 illustrates an application of a driver circuit of the present invention to a capacitance sensor or a charge sensor; and

[0043] FIG. 18 illustrates an application of a driver circuit of the present invention to a night vision camera.

DETAILED DESCRIPTION OF PREFERRED EMBODIMENTS

[0044] The embodiments of the present invention are described referring to the attached drawings with further

examples. These are of course only examples. In this embodiment, in respect to the circuit shown in the above described FIG. 2, common portions regarding the structure, operation and operating effects are as described above, and the differing portions are mainly described.

[0045] As shown in FIG. 3, the circuit of this embodiment can include, first, in addition to the circuit shown in FIG. 2 described above, an additional transistor T_5 and an additional switching transistor T_6 . These T_5 and T_6 are p-type transistors. The source of the switching transistor T_6 is connected to the storage capacitor C_1 , and the drain thereof is connected to the source of the p-type transistor T_1 . The gates of the additional switching transistor T_6 , T_1 , and the p-type transistor T_3 are connected to each other. The gates of T_1 , T_3 , and T_6 are applied with a programming voltage V_p . The T_1 is connected to C_1 via the drain and source of the T_6 .

[0046] The source of the additional T_5 is connected to V_{DD} and its gate is connected to the storage capacitor C_1 , and is applied with the same driver voltage signal as the gate of the transistor T_2 . The drain of transistor T_5 is connected to the common point of connection of the transistors T_1 , T_3 , and T_6 . That is, the storage capacitor C_1 is also connected between the gate and source of the additional transistor T_5 .

[0047] In the circuit of FIG. 3, the programming voltage V_p is applied to the gates of transistors T_1 and T_3 , and T_6 . The p-type transistor T_4 which is switched off during the programming stage, connects the drain of the p-type transistor T_2 and the source of T_3 to the OEL element. During the programming stage, the transistor T_1 operatively connects transistor T_2 , T_5 to a current sink, which is tied to ground or to a reference voltage.

[0048] The circuit of FIG. 3 operates in the programming stage with T_4 switched off and T_1 , T_3 and T_6 switched on. T_3 and T_6 being switched on have the effect of making T_2 and T_5 act as diodes. Further, T_1 connects this diode T_2 and T_5 to the data current sink. As a result, the storage capacitor C_1 charges (or discharges, depending on the voltage stored during the previous frame). Storage capacitor C_1 charges to the gate/source voltage of transistor T_2 and T_5 , thus stores the voltage (V_{GS2} , corresponding to the data current I_{DAT}), which will control the current supply to the OEL element during the reproduction stage. Here, the data current I_{DAT} is a data signal output by the data line. At the end of the programming stage, T_1 , T_3 and T_6 are switched off. The voltage V_{GS2} is stored on C_1 for the remainder of the frame period, that is for the reproduction stage.

[0049] More specifically, the circuit in FIG. 3 in the programming stage, operates as the circuit shown in FIG. 4. That is, in FIG. 4, the programming paths from the two auxiliary (or sub-) current paths including the two transistors T_2 and T_5 which operate as diodes are formed.

[0050] The reproduction voltage V_R is applied to the gate of transistor T_4 . At the beginning of the reproduction stage, in the circuit of FIG. 3, T_4 is switched on and T_1 , T_3 and T_6 remain switched off. As a result, the reproduction path as shown in FIG. 5 is formed, T_2 acts as a current source with V_{GS2} biased by C_1 , thus supplying current to the OEL element. At the end of the reproduction stage T_4 is switched off, T_1 , T_3 and T_6 remain switched off. This completes one cycle. This driving waveform is indicated in FIG. 3.

[0051] As described above and shown in FIG. 4, during the programming stage, two auxiliary (or sub-) current paths

including the two transistors T_2 and T_5 which operate as diodes are formed. Accordingly, for example, if the ratio of the current supply power of the T_2 and T_5 are set as 1:9, as in FIG. 6, if the current I_{OEL} supplied to the electroluminescent element in the production stage is the same 100[nA], as compared to the circuit shown in FIG. 2 in which the data current I_{DAT} is 100[nA], this embodiment may be increased 10 times to 1[μA]. As a result, as shown in FIG. 6, the programming stage period (programming time) in which the data current I_{DAT} flows, may be made extremely short as 40[μS] compared to the 100[μS] in the circuit as shown in FIG. 2. Therefore, a big increase in speed of the programming operation can be achieved. The comparison shown in FIG. 6 is of course only one example.

[0052] In the organic electroluminescent element device, an example of mounting the driver circuit of FIG. 3 is shown in FIG. 7. In the circuit of FIG. 7, a plurality of circuit blocks 10 are connected to a common current sink.

[0053] As other embodiments, circuit examples are shown in FIGS. 8 and 9. In the circuit of FIG. 8, transistors T_1 and T_6 are turned on, and the two auxiliary (or sub-) current paths including the two transistors T_2 and T_5 which operate as diodes are formed. Then, at the start of the reproduction stage, T_4 is turned on and T_1 and T_6 remain turned off. As a result, as shown in FIG. 8, T_4 acts as a current source with V_{GS2} biased by C_1 , thus supplying current to the OEL element. At the end of the reproduction stage T_4 is switched off, T_1 and T_6 remain switched off. This completes one cycle. This driving waveform is indicated in FIG. 8. As in the embodiment of FIG. 8, similarly to the circuit of FIG. 3 described above, the data current I_{DAT} may be increased, and the programming operation may be made quicker. For example, if T_2 , T_4 and T_5 are structured as a same characteristic transistor, the characteristics of the transistors may be easily matched, and also a state of $I_{DAT}:I_{OEL}=2:1$ may be realized.

[0054] As shown in FIG. 9, during the programming stage, transistors T_1 , T_3 and T_6 are turned on, and two auxiliary (or sub-) current paths including the two transistors T_2 and T_5 which operate as diodes are formed. Accordingly, at the start of the reproduction stage, T_4 is turned on and T_1 , T_3 and T_6 remain turned off. As a result, as shown in FIG. 9, T_4 acts as a current source with V_{GS2} biased by C_1 , thus supplying current to the OEL element. At the end of the reproduction stage T_4 is switched off, and T_1 , T_3 and T_6 remain switched off. This completes one cycle. The driving waveform is indicated in FIG. 9. As in the embodiment of FIG. 9, similarly to the circuit of FIG. 3 described above, the data current I_{DAT} may be increased, and the programming operation may be made quicker. For example, if T_2 and T_5 are structured as a same characteristic transistor, the characteristics of the transistors may be easily matched, and also a state of $I_{DAT}:I_{OEL}=2:1$ may be realized.

[0055] FIG. 10 is a schematic cross-sectional view of a certain OEL element device. In FIG. 10, numeral 132 indicates a hole injection layer, numeral 133 indicates an organic EL layer, and numeral 151 indicates a resistor or a separating structure formed by an insulating film. The switching thin-film transistor 121 and the p-channel type current thin-film transistor 122 adopt the structure and the process ordinarily used for a low temperature polysilicon thin-film transistor liquid crystal display devices, such as a

top-gate structure and a fabrication process, wherein the maximum temperature is 600°C or less. However, other structures and processes are applicable.

[0056] The organic EL display element 131 is formed by the cathode 116 formed of Al, the anode 115 formed of ITO, the hole injection layer 132, and the organic EL layer 133.

[0057] The hole injection layer 132 and the organic EL layer may be formed by a technique, such as an ink-jet printing method or a mask evaporation method, employing the resist 151 as a separating structure between the pixels. The opposite anode 115 formed of ITO may be formed using a sputtering method. However, other methods may also be used for forming all of these components. For example, an electron transporting layer may be arranged in between the light emitting layer and the cathode.

[0058] The typical layout of a full display panel employing the present invention is shown schematically in FIG. 11. The panel can include an active matrix OEL element 200 with analogue current program pixels, an integrated TFT scanning driver 210 with level shifter, a flexible TAB tape 220, and an external analogue driver LSI 230 with an integrated RAM/controller. Of course, this is only one example of the possible panel arrangements in which the present invention can be used.

[0059] It should be understood that the structure of the organic EL display device is not limited to the one described here. Other structures are also applicable without departing from the spirit and scope of the present invention.

[0060] Preferably the circuits shown in FIGS. 3 to 11 are implemented using thin film transistor (TFT) technology, most preferably in polysilicon TFT.

[0061] The present invention is particularly advantageous for use in small, mobile electronic products such as mobile phones, computers, CD players, DVD players and the like, although it is not limited thereto.

[0062] For example, several electronic apparatuses using the above organic electroluminescent display device will now be described.

[0063] An example in which the display device according to one of the above embodiments is applied to a mobile personal computer will now be described. FIG. 12 is an isometric view illustrating the configuration of the personal computer. In the drawing, the personal computer 1100 is provided with a body 1104 including a keyboard 1102 and a display unit 1106. The display unit 1106 is implemented using a display panel fabricated according to the present invention, as described above.

[0064] Next, an example in which the display device of the present invention is applied to a display section of a portable phone will be described. FIG. 13 is an isometric view illustrating the configuration of the portable phone. In the drawing, the portable phone 1200 is provided with a plurality of operation keys 1202, a speaker 1204, a mouthpiece 1206, and a display panel 100. This display panel 100 is implemented using a display panel fabricated according to the present invention, as described above.

[0065] Next, a digital still camera using an OEL display device as a finder will be described. FIG. 14 is an isometric

view illustrating the configuration of the digital still camera and the connection to external devices in brief.

[0066] Typical cameras sensitize films based on optical images from objects, whereas the digital still camera 1300 generates imaging signals from the optical image of an object by photoelectric conversion using, for example, a charge coupled device (CCD). The digital still camera 1300 is provided with an OEL element 100 at the back face of case 1302 to perform display based on the imaging signals from the CCD. Thus, the display panel 100 functions as a finder for displaying the object. A photo acceptance unit 1304 including optical lenses and the CCD is provided at the front side (behind in the drawing) of the case 1302.

[0067] When a cameraman determines the object image displayed in the OEL element panel 100 and releases the shutter, the image signals from the CCD are transmitted and stored to memories in a circuit board 1308. In the digital still camera 1300, video signal output terminals 1312 and the input/output terminals 1314 for data communication are provided on a side of the case 1302. As shown in the drawing, a television monitor 1430 and a personal computer 1440 are connected to the video signal terminals 1312 and the input/output terminals 1314, respectively, if necessary. The imaging signals stored in the memories of the circuit board 1308 is output to the television monitor 1430 and the personal computer 1440, by a given operation.

[0068] Examples of electronic apparatuses, other than the personal computer shown in FIG. 12, the portable phone shown in FIG. 13, and the digital still camera shown in FIG. 14, can include OEL element television sets, view-finder-type and monitoring-type video tape recorders, car navigation systems, pagers, electronic notebooks, portable calculators, word processors, workstations, TV telephones, point-of sales system (POS) terminals, devices provided with touch panels, and the like. Of course, the above OEL device can be applied to display sections of these electronic apparatuses.

[0069] The driver circuit of the present invention can be disposed not only in a pixel of a display unit but also outside a display unit.

[0070] In the above description, the driver circuit of the present invention has been described with reference to various display devices. However, it should be understood that the applications of the driver circuit of the present invention are much broader than just display devices and include, for example, its use with a magneto resistive RAM, a capacitance sensor, a charge sensor, a DNA sensor, a night version camera and many other devices.

[0071] FIG. 15 illustrates the application of the driver circuit of the present invention to a magnetic RAM. In FIG. 15 a magnetic head is indicated by the reference MH.

[0072] FIG. 16 illustrates an alternative application of the driver circuit of the present invention to a magnetic resistance element. In FIG. 16 a magnetic head is indicated by the reference MH, and a magnetic resistor is indicated by the reference MR.

[0073] FIG. 17 illustrates the application of the driver circuit of the present invention to a capacitance sensor or a charge sensor. In FIG. 17 a sense capacitor is indicated by

the reference C_{sense} . The circuit of FIG. 17 is also applicable to other applications, such as a fingerprint sensor and a DNA sensor.

[0074] FIG. 18 illustrates the application of the driver circuit of the present invention to a night vision camera. In FIG. 18 a photoconductor is indicated by reference R.

[0075] In the embodiments illustrated with reference to the above specific description the transistors have been shown as p-channel transistors. This is not limiting of the present invention. For example, n-channel transistors may be used throughout the circuit, except for the drive transistor, which is retained as a p-channel transistor.

[0076] It will be apparent to persons skilled in the art that other variations and modifications can be made to the arrangements described with respect to FIGS. 3 to 18 without departing from the spirit and scope of the present invention.

What is claimed is:

1. An electronic circuit having a programming path and a reproduction path, the circuit comprising:

- a current driven element;
- a first transistor in the reproduction path arranged so as operatively to control a current supplied to the current driven element;
- a capacitor arranged that stores an operating voltage of the first transistor;
- a second transistor arranged so as to be in parallel to the first transistor in the reproduction path, that stores the operating voltage in the capacitor; and
- a switching device that controls the programming path and the reproduction path.

2. An electronic circuit that drives a pixel of an electroluminescent device, the pixel including an electroluminescent element, the circuit comprising:

- a first transistor arranged so as operatively to control a current supplied to the electroluminescent element;
- a capacitor arranged that stores an operating voltage of the first transistor during a programming stage;
- a second transistor arranged in parallel to the transistor that stores the operating voltage to the capacitor;
- a first switching device connected so as operatively to establish a current path through the first transistor and the second transistor during the programming stage; and
- a second switching device connected so as to operatively establish a current path through the first transistor and the electroluminescent element during a reproduction stage.

3. An electronic circuit that drives a pixel of an electroluminescent device, the pixel including an electroluminescent element, the circuit comprising:

- a first transistor connected so as operatively to control a current supplied to the electroluminescent element;
- a capacitor connected that stores an operating voltage of the first transistor during a programming stage;

- a second transistor connected in parallel with the first transistor that stores the operating voltage in the capacitor;
 - a first switching device connected so as to establish a current path through the first transistor and the second transistor during the programming stage;
 - a second switching device connected so as to establish when operative a current path through the first transistor and the electroluminescent element during a reproduction stage; and
 - a current sink, the first switching device being arranged such that the current path in the programming stage is connected to the current sink via the first transistor and the second transistor.
4. An electronic circuit as claimed in claim 2, the first and second switching controlled by respective control signals separate from each other.
5. An electronic circuit as claimed in claim 2, further comprising a third switching device arranged so the first transistor acts as a diode when it is turned on during the programming stage.
6. An electronic circuit as claimed in claim 5, the third switching device connecting the first switching device to the source/drain current path of the first transistor.
7. An electronic circuit as claimed in claim 2, further comprising an additional switching device arranged to be connected so the second transistor acts as a diode when turned on during the programming stage.
8. An electronic circuit as claimed in claim 7, the additional switching device being arranged between the capacitor and the first switching device.
9. An electronic circuit as claimed in claim 7, the additional switching device connecting the first switching device to the gates of the first transistor and the second transistor.
10. An electronic circuit as claimed in claim 5, a third switching device interconnecting drains of the first transistor and the second transistor, and a gate of the second transistor being connected to a gate of the first transistor.
11. An electronic circuit as claimed in claim 9, comprising a plurality of second transistors each with a respective additional switching device, each additional switching device being arranged in series with each other.
12. An electronic circuit, comprising:
- a current driven element;
 - a data line that outputs a current as a data signal;
 - a capacitor that stores charge based on current output via the data line;
 - a plurality of transistors arranged in parallel to each other as well as having the capacitor being connected to a gate;
 - and a driven transistor arranged in series to the current driven element, the electronic circuit supplying current according to a charge stored in the capacitor based on a current amount flowing in a current path including the plurality of transistors in a state where the plurality of transistors are connected to the data line via the driven transistor.
13. An electronic circuit that drives a pixel of an electroluminescent device, the pixel comprising an electroluminescent element, the circuit comprising:
- a current driven element;
 - a data line that outputs a current as a data signal;
 - a capacitor that stores charge based on the current output via the data line;
 - a plurality of transistors with the capacitor being connected to a gate; and
 - a driven transistor arranged in series to the current driven element, wherein the electronic circuit supplies a current according to the charge stored in the capacitor based on a current amount flowing in a current path including the plurality of transistors in a state where the plurality of transistors are connected to the data line via the driven transistor to the current driven element;
- including a first switching device that forms a programming path through the plurality of transistors, and a current sink;
- the first switching device being arranged to connect to the current sink via the plurality of transistors in the programming path.
14. An electronic circuit as claimed in claim 12, further comprising a second switching device arranged to be connected so the plurality of transistors act as diodes when the switching device is turned on in the programming path.
15. An electronic circuit as claimed in claim 14, the second switching device being arranged between the capacitor and the first switching device.
16. An electronic circuit as claimed in claim 14, the second switching device connecting the first switching device to the gates of the plurality of transistors.
17. An electronic circuit as claimed in claim 14, the gates of the plurality of transistors being connected to each other.
18. An electronic circuit, comprising:
- a current driven element;
 - a data line that outputs a current as a data signal;
 - a capacitor that stores charge based on a current output via the data line;
 - a plurality of transistors arranged in parallel to each other as well as the capacitor being connected with a gate; and
 - a driver transistor arranged in series to the current driven element, the electronic circuit supplying current according to the charge stored in the capacitor based on a current amount flowing in a current path including the plurality of transistors in a state where the plurality of transistors are connected to the data line via at least one of the plurality of transistors.
19. An electronic circuit that drives a pixel of the electroluminescent device, the pixel comprising the electroluminescent element, the circuit comprising:
- a current driven element;
 - a data line that outputs a current as a data signal;
 - a capacitor that stores charge based on current output via the data line in a programming stage; and
 - a plurality of transistors with the capacitor being connected to the gate, the electronic circuit supplying current according to the charge stored in the capacitor based on a current amount flowing in a current path

including the plurality of transistors in a state where the plurality of transistors are connected to the data line via a driven transistor to the current driven element;

the circuit further including a first switching device that operatively generates a current path through the plurality of transistors in the programming stage; and

the second switching device that operatively generates a current path through at least one of the plurality of transistors and the electroluminescent element in a reproduction stage.

20. An electronic circuit as claimed in claim 19, the first and second switching devices being controlled by respective control signals that are separated from each other.

21. An electronic circuit as claimed in claim 19, further comprising a third switching device arranged to be connected so the plurality of transistors act as diodes when turned on during the programming stage.

22. An electronic circuit as claimed in claim 21, the third switching device connecting at least one of the plurality of transistors to an electroluminescent element in the programming stage.

23. An electronic circuit as claimed in claim 19, further comprising an additional switching device arranged to be connected so the plurality of transistors act as diodes when turned on during the programming stage.

24. An electronic circuit as claimed in claim 23, the additional switching device is disposed between the capacitor and the electroluminescent element.

25. An electronic circuit as claimed in claim 21, a third switching device interconnecting drains of the plurality of transistors, the drains being connected to the electroluminescent element, and gates of the plurality of transistors being connected to each other.

26. An electronic circuit as claimed in claim 1, the first transistor being a p-channel thin film transistor.

27. An electronic circuit as claimed in claim 12, at least one of the plurality of transistors being a p-channel thin film transistor.

28. An electronic circuit as claimed in claim 5, the first, the second, and the third switching devices being formed respectively of p-channel thin film transistors.

29. An electronic circuit as claimed in claim 14, the switching device and the second switching device being respectively, p-channel thin film transistors.

30. An electroluminescent display device comprising one or more electronic circuit as claimed in claim 1.

31. An electronic apparatus incorporating the electroluminescent display device as claimed in claim 30.

32. A method of controlling a current supply to an electroluminescent element, comprising the steps of:

providing a programming path including a plurality of auxiliary current paths; and

providing a reproduction path which passes through the electroluminescent element.

33. A method of controlling a current supply to an electroluminescent element, comprising the steps of:

providing a programming path including a plurality of auxiliary current paths which connect to a current sink; and

providing a reproduction path which passes through the electroluminescent element.

34. A method for driving a circuit including a current driven element and a transistor that controls a current supplied to the current driven element, comprising a step of determining a gate voltage of the transistor based on a predetermined current, the predetermined current being larger than the current supplied to the current driven element.

35. An electronic circuit as claimed in claim 3, the first and second switching controlled by respective control signals separate from each other.

36. An electronic circuit as claimed in claim 3, further comprising a third switching device arranged so the transistor acts as a diode when it is turned on during the programming stage.

37. An electronic circuit as claimed in claim 36, the third switching device connecting the first switching device to the source/drain current path of the transistor.

38. An electronic circuit as claimed in any of claims 3, further comprising an additional switching device arranged to be connected so the second transistor acts as a diode when turned on during the programming stage.

39. An electronic circuit as claimed in claim 2, the first transistor being a p-channel thin film transistor.

40. An electronic circuit as claimed in claim 3, the first transistor being a p-channel thin film transistor.

41. An electronic circuit as claimed in claim 13, at least one of the plurality of transistors being a p-channel thin film transistor.

42. An electroluminescent display device comprising one or more electronic circuit as claimed in claim 2.

43. An electroluminescent display device comprising one or more electronic circuit as claimed in claim 3.

* * * * *

| | | | |
|----------------|--|---------|------------|
| 专利名称(译) | 电子电路，电致发光显示装置，电光装置，电子设备，控制向有机电致发光像素的电流供应的方法，以及用于驱动电路的方法 | | |
| 公开(公告)号 | US20030142046A1 | 公开(公告)日 | 2003-07-31 |
| 申请号 | US10/337988 | 申请日 | 2003-01-08 |
| [标]申请(专利权)人(译) | 精工爱普生株式会社 | | |
| 申请(专利权)人(译) | SEIKO EPSON CORPORATION | | |
| 当前申请(专利权)人(译) | SEIKO EPSON CORPORATION | | |
| [标]发明人 | KASAI TOSHIYUKI TAM SIMON | | |
| 发明人 | KASAI, TOSHIYUKI TAM, SIMON | | |
| IPC分类号 | H01L51/50 G09G3/20 G09G3/30 G09G3/32 G11C27/02 | | |
| CPC分类号 | G09G3/325 G09G2300/0842 G09G2300/0861 G11C27/024 G09G2310/0251 G09G2320/0252 G09G2310/0248 | | |
| 优先权 | 2002000411 2002-01-09 GB | | |
| 其他公开文献 | US7138968 | | |
| 外部链接 | Espacenet USPTO | | |

摘要(译)

本发明提供一种电子电路，其可包括编程路径和再现路径。该电路还可包括电流驱动元件，生产路径中的晶体管，其布置成可操作地控制提供给电流驱动元件的电流，电容器，用于存储晶体管的工作电压，附加晶体管，并联设置。用于存储电容器和工作电压的编程路径中的晶体管，以及控制编程路径和再现路径的开关器件。

